

## SIZE MATTERS — DO MORE WITH LESS

EXP® punch tip technology from Wilson Tool International provides manufacturers with a universal tool that is more affordable and durable than standard punches. Manufacturers who run EXP® tooling benefit from decreased tool set-up time, less time resharpener, less storage space required, plus the advantages of Ultima® tool steel — increased tool life and more hits between sharpening. Available for Thick Turret, Thin Strippit and Salvagnini® tooling.

### Faster Tool Changes

Loading EXP is as easy as inserting the punch tip into the punch holder. Switching from one punch to the next can be done in seconds, significantly reducing downtime — just push the button to release EXP punch tip.\*

### Longer-Lasting Punches

An EXP punch tip costs less than a standard punch and is made with Wilson Tool's proprietary Ultima® tool steel which has been shown to last up to 2X longer between grindings than standard steel. These enhancements ensure that optimal life and durability are placed where the tool needs it most — in the tip.

### Storage Savings

A fraction of the size of standard punches, EXP punches give you the flexibility to stock more shapes, using less space for storage.

### Universal Design

EXP punch tip holders afford greater flexibility as they provide the ability to adapt your current guide assemblies to run EXP tooling. Easily convert your existing assemblies to enjoy the ease, speed and durability of EXP punch tips.

Holders are available for the following styles:

- A & B-station HP/HP2 and HP/HP2 ABS
- A & B-station Wilson and Metric Thick Turret
- A & B-station Ultra®
- B-station Thin Strippit
- MTX Multi-tools
- Salvagnini

### Lowest Cost of Ownership in the Long Term

When you consider the lower punch price combined with faster setup, increased life between sharpening, and greater versatility, EXP clearly offers the lowest cost of ownership of any punch on the market today.

\*Push button release of EXP punch tips available only for Thick Turret tooling.



Scan QR Code to  
Explore More EXP®

# EXP® PUNCH TIP HOLDERS

## THICK TURRET A STATION

**Wilson Basix**



**Metric Basix/HP2**



**Metric Basix ABS/HP2 ABS**



**Wilson HP/HP2**



**Wilson HP ABS/HP2 ABS**



**Ultra®**



**EXP®**



A Station	Round	Shaped
<b>Wilson Basix</b>	14901	14899
<b>Metric Basix/Metric HP2</b>	14905†	14903
<b>Metric Basix ABS/HP2 HP2</b>	14909†	14907
<b>Wilson HP/HP2</b>	14897	14895
<b>Wilson HP ABS/HP2 ABS</b>	14893	14891
<b>Ultra®</b>	15575	15575
<b>EXP® Punch</b>	13904	13905

†Pinned Round

## THICK TURRET B STATION

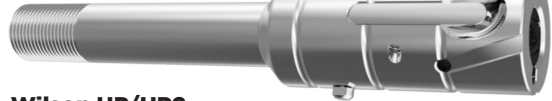
**Wilson Basix**



**Metric Basix/HP2**



**Metric Basix ABS/HP2 ABS**



**Wilson HP/HP2**



**Wilson HP ABS/HP2 ABS**



**Ultra®**



**EXP®**



B Station	Round	Shaped
<b>Wilson Basix</b>	14923	14921
<b>Metric Basix/Metric HP2</b>	14927†	14925
<b>Metric Basix ABS/HP2 HP2</b>	14931†	14929
<b>Wilson HP/HP2</b>	14919	14917
<b>Wilson HP ABS/HP2 ABS</b>	14915	14913
<b>Ultra®</b>	15577	15577
<b>EXP® Punch</b>	13916	13917

†Pinned Round

## THIN STRIPPIT

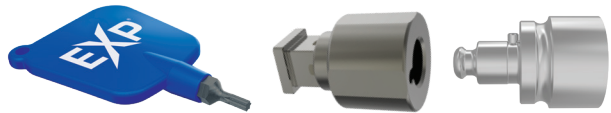


B Station	Round	Shaped
<b>FAB-Style</b>	10627	10627
<b>EXP® Punch</b>	13916	13917

Ultra is a trademark of Mate Precision Technologies. Wilson Tool supplies punches and strippers that are 100% compatible with Ultra guide assemblies & holders.

Salvagnini is trademarked by SALVAGNINI S.p.A. CORPORATION ITALY Strada della Favorita Sarego, Vicenza ITALY.

## SALVAGNINI®



	Round	Shaped
<b>33mm</b>	17712	10627
<b>EXP® Punch</b>	17916	17917

For more information, visit [wilsontool.com/EXP](http://wilsontool.com/EXP), call our tooling technicians at 800.328.9646 or contact your sales engineer.

© Wilson Tool International. All rights reserved. P701F (12.2023)