

# BUS BAR TOOLING FROM THE PROVIDER YOU TRUST

Reliability is a critical component of bus bar manufacturing. Wilson Tool International's EHRT style punches and dies are engineered to meet the most rigorous quality and tolerance standards, delivering accuracy and durability with each and every hit.

Wilson Tool offers a comprehensive line of OEM compatible EHRT products, including punches, strippers, dies (Slug Hugger® available), split cylinder, tool guides and multi-tools. Other styles of bus bar tooling are also available.



### Coatings to Boost Tooling Performance

Customize tooling for your specific application with Slip-Max®, Optima® and Wearbeater™ coatings. Scan QR code to learn more.

### Wilson Tool High Grade Tool Steel

Wilson Tool EHRT punches and dies are made from high-grade tool steel that stands up to copper, aluminum and steel for maximum grind life and more hits between regrinds.

### 4X GRIND LIFE with EHRT HP Adjustable Driver Assembly

Available in EHRT Standard sizing, the HP Adjustable Driver delivers the most grind life in the industry, while eliminating the shimming needs of standard punches.

- Max. "A" Dim. = 56mm (2.204")
- Up to .250" grind life (vs. OEM grind life of .060")
- No shimming required

### EHRT Standard Tooling

Used in all smaller machines rated at 40 tons or less.

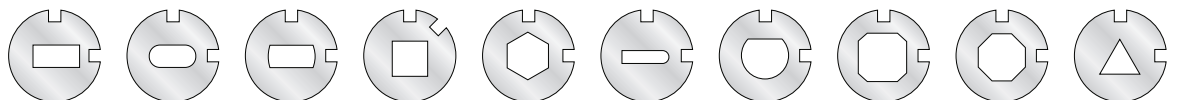
DESCRIPTION	ROUND	SHAPE	SHANK SIZE
Punch Insert	6924	6925	0.236-1.260" [6-32mm]
Stripper	6926	6927	
Die-SPT	6928	6929	
Die-SH2	7081	7082	
FlexPunch Die-SPT	7106	7107	
FlexPunch Die-SH2	7108	7109	



### Split Cylinder for Standard Tooling

SHAPE	CAT. NO.	SHAPE	CAT. NO.
6mm	7047	16mm	7052
8mm	7049	20mm	7053
10mm	7050	25mm	7054
13mm	7051	32mm	7055

### Standard Shape Options



# EHRT BUS BAR TOOLING

## EHRT Professional (Maxi) Tooling

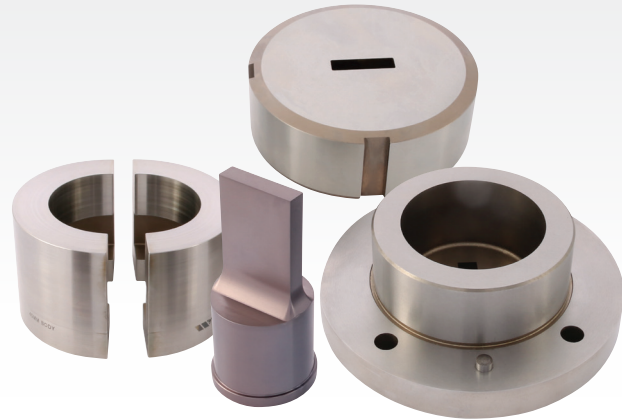
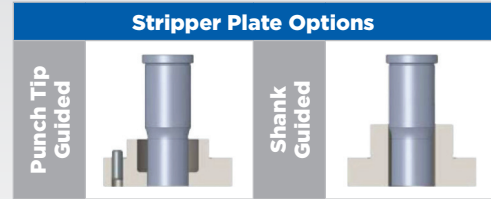
The EHRT Professional (Maxi) line of tooling is ideal for high volume applications. Wilson Tool offers a comprehensive range of punches and dies for the EHRT Professional line, accommodating any standard bus bar thickness.

- Max. "A" Dim. = 56mm (2.204")
- Max. Material = 20mm (.787")

Used in all larger machines rated at 80 tons.

DESCRIPTION	ROUND	SHAPE	SHANK SIZE
Punch Insert	7037	7038	0.630-2.204" [16-56mm]
Stripper	7032	7033	
Die	7034	7035	

Note: Split cylinders for maxi tooling available.



## Get More From Your Multi-Tools

Multi-tools promote greater capacity while saving time otherwise spent on tool changes. Our innovative HP tooling allows for .250" grind life and is available for MT4/MT6 and MT6x styles. Serving older and newer machines alike, Wilson Tool International offers standard style MT4/MT6, MT6X and MT3X styles as well.

- Max. "A" Dim. = 20mm (.787")

	TOOLING STYLE	STRIPPER & DIE SHAPE	PUNCH LENGTH	GRIND LIFE
MT4 / MT6	Standard	Round	Not Adjustable	None
	HP		Adjustable	.250"
MT6X	Standard	Octagonal	Not Adjustable	None
	HP		Adjustable	.250"
MT3X	Standard	Octagonal	Not Adjustable	None

	MT4 / MT6		MT6X		MT3X	
	ROUND	SHAPE	ROUND	SHAPE	ROUND	SHAPE
HP Driver	7103	7103	7104	7104	S110	S110
HP Punch	7093	7094	7093	7094	S110	S110
Standard Punch	7005	7006	7091	7092	7117	7118
Stripper	7009	7010	7101	7102	7101	7102
Die-SH2	7007	7008	7097	7098	7121	7122
Die-SPT	—	—	7095	7096	7119	7120



EHRT is a trade name of EHRT Maschinenbau in Germany.

For more information, visit [wilsontool.com/punching](http://wilsontool.com/punching), call our tooling technicians at 800.328.9646 or contact your sales engineer.

© Wilson Tool International. All rights reserved. P241F (12.2023)



**Wilson Tool International**  
punching@wilsontool.com | 800.328.9646