

# CREATE, MODIFY AND REUSE RETAINERS

## Do-It-Yourself

Retainers can be made and modified on site and on demand with HP Accu-Lock® Retainer Inserts by Wilson Tool International. HP Accu-Lock simplifies the use of special retainers by eliminating the need for complicated jigs, inspection fixtures and specialized knowledge to machine ball holes into the punch plate. In fact, HP Accu-Lock eliminates the ball hole. Punches are held securely in place with a straight-line machined hole that can easily be created in-house.

## Shorter Lead Times and Less Waste Means Lower Costs

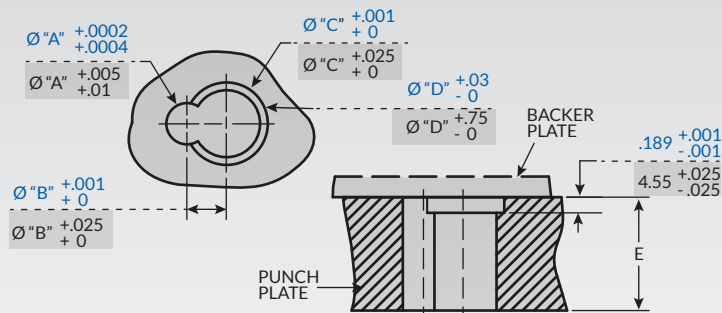
Purchasing custom retainers for a special request is costly and can add weeks to a job. With HP Accu-Lock, you can not only create your own special retainers in-house but also modify and reuse existing retainers. Cut your lead times from several weeks to a day and significantly reduce waste.

## HP Accu-Lock Retainer Inserts let you:

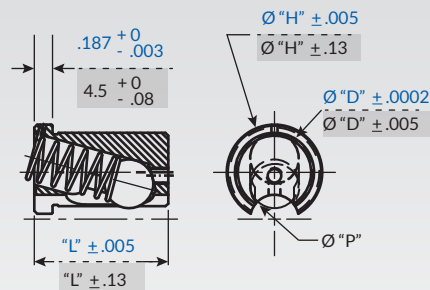
- Create new special retainers in-house
- Modify and reuse existing retainers
- Hold punches securely and accurately

HP Accu-Lock Retainer Inserts are fully compatible with all ball lock punches, including HP Ball Lock punches from Impax Tooling Solutions®, available in metric and imperial sizes.





**Punch Plate Hole Specification**



**Insert Specification**

	STYLE CODE	SHANK CODE	SHANK DIA.	INSERT DIA. (D)	HEAD DIA. (H)	LENGTH (L)	PUNCH DIA. HOLE (A)	CENTER TO CENTER (B)	INSERT HOLE DIA. (C)	HEAD C-BORE DIA. (D)	PLATE THICKNESS (E)	INNER BOOSTER SPRING	
IMPERIAL	HEAVY DUTY	IHIS	037	.375	.625	.735	1.38	.375	.375	.6255	.75	1.38	972100
			050	.5	.8125	.98		.5	.48	.813	1		
			062	.625	.8125	.98		.625	.543	.813	1		
			075	.75	.8125	.98		.75	.605	.813	1		
			087	.875	.8125	.98		.875	.668	.813	1		
			100	1	.8125	.98		1	.73	.813	1		
	LIGHT DUTY	ILIS	025	.25	.5	.615	1	.25	.28	.5005	.625	1	972100
			037	.375	.5	.615		.375	.325	.5005	.625		
			050	.5	.5625	.69		.5	.406	.5630	.72		
			062	.625	.5625	.69		.625	.469	.5630	.72		
			075	.75	.625	.735		.75	.563	.6255	.75		
			087	.875	.625	.735		.875	.625	.6255	.75		
METRIC	HEAVY DUTY	MHIS	010	10	16	19.6	34.7	10	10	16.013	20	34.7	972100
			013	13	20	24.6		13	11.5	20.013	25		
			016	16	20	24.6		16	13	20.013	25		
			020	20	20	24.6		20	15	20.013	25		
			025	25	20	24.6		25	17.5	20.013	25		
			032	32	20	24.6		32	21	20.013	25		
	LIGHT DUTY	MLIS	040*	40	20	24.6	25.7	40	25	20.013	25	25.7	972100
			006	6	12	14.6		6	6.5	12.013	15		
			010	10	14	16.6		10	9	14.013	17		
			013	13	14	16.6		13	10.5	14.013	17		
			016	16	14	16.6		16	12	14.013	17		
			020	20	14	18.6		20	14	16.013	19		
025	25	16	18.6	25	16.5	16.013	19						
032	32	16	18.6	32	20	16.013	19						
038	38	16	18.6	38	23	16.013	19						

**Impax Tooling Solutions®**  
800-944-4671 | stamping@wilsonstool.com

**Exacta Tooling Solutions™**  
800-268-5573 | exactastamping@wilsonstool.com

For more information on stamping tooling, visit [wilsonstool.com](http://wilsonstool.com), call our tooling technicians or contact your sales engineer.

© 2018 Wilson Tool International. All rights reserved. S406F (3.2018)