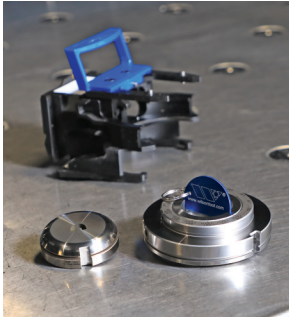
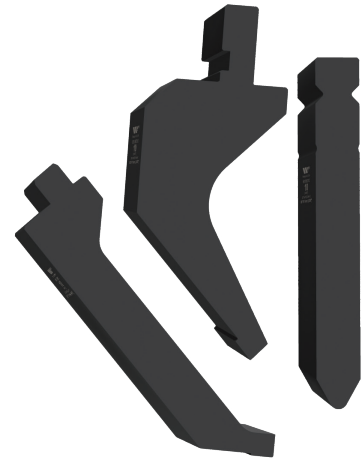
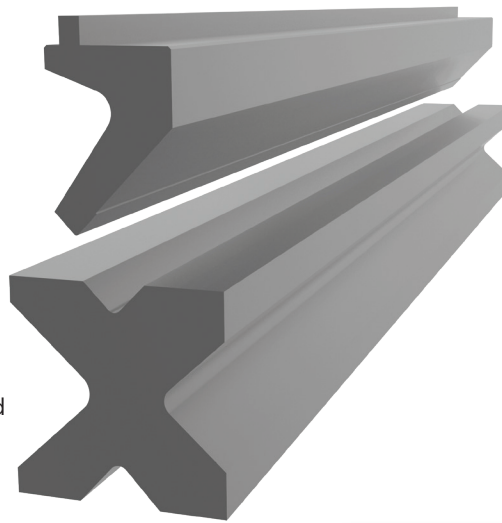


# OUTLAST & OUTPERFORM



## WHO IS WILSON TOOL INTERNATIONAL?

Wilson Tool is a global leader in press brake and punch press tooling for the sheet metal fabrication industry. We design and manufacture tooling that helps fabricators improve productivity, part quality, and process reliability without compromise.



## Why Choose Wilson Tool?

Manufacturers choose Wilson Tool for fast quotes, faster deliveries and tooling that performs day after day, contributing to a lower total cost of ownership.

- **Longer Tool Life:** Premium materials and advanced heat treatment for exceptional durability
- **Consistent Performance:** Accurate, repeatable results that reduce downtime and secondary operations
- **Application-Focused Engineering:** Tooling designed around real production needs
- **Special and Custom Solutions:** Innovative solutions for complex problems – we make the impossible possible
- **Tooling Technicians:** Extensive tooling knowledge helps to reduce downtime and increase overall productivity

## FOR MORE INFORMATION



**Local Sales Engineer**



**800.445.4518  
Tooling Technicians**



**wilsontool.com**

©Wilson Tool International. All rights reserved. WT100F (2.2026)



**WILSON TOOL INTERNATIONAL**  
wilsontool.com | 866.752.6531

